

**GURU NANAK KHALSA COLLEGE FOR WOMEN
GUJARKHAN CAMPUS, MODEL TOWN, LUDHIANA**



**Supporting Document
(2024-2025)**

**7.1.7 - Institution has disabled-friendly, barrier
free environment**

**Dr. Maneeta Kahlon
Principal**

Dr. MANEETA KAHLON
Principal
G.N.Kh. College for Women
Gujarkhan Campus, Model Town
Ludhiana

Guru Nanak Khalsa college advocates for a barrier-free environment, enabling individuals with disabilities to navigate the built environment securely and autonomously, and to utilize its facilities unhindered. The environment fosters the independent functioning of individuals, the institution aims to advance a comprehensive and inclusive teaching and learning environment for all students with incapacities. The college strives to designs its programs, administrative functions, and activities to be readily accessible to all students.

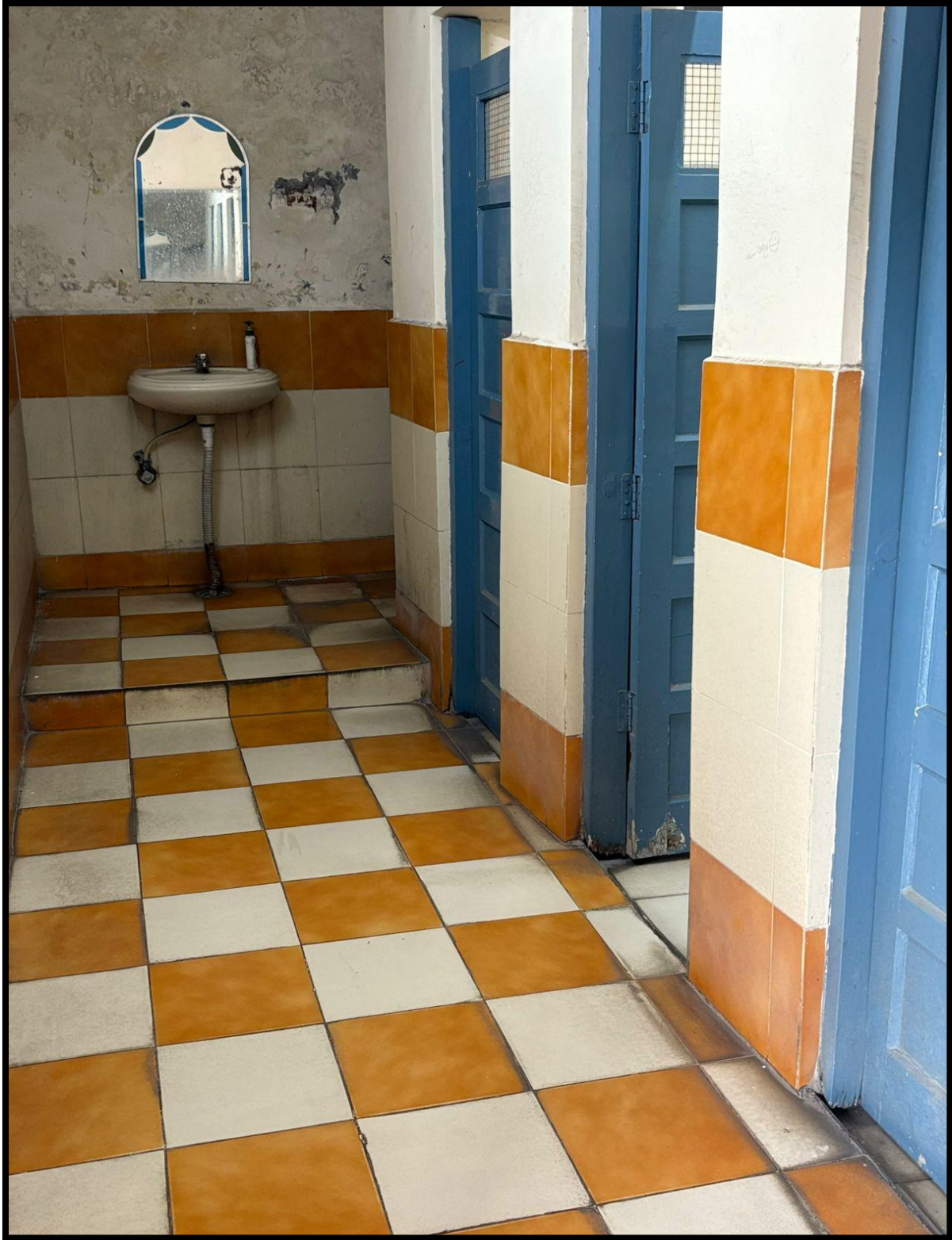
Disabled friendly washrooms

Accessible washrooms are provided within the college premises for students requiring special accommodations. The facilities are designed in adherence to standard specifications to accommodate individuals with physical disabilities. Extensive measures have been implemented to ensure the college is a preferred choice for students with disabilities offering appropriate amenities, infrastructure, supportive facilities and a sensitized ambience to foster inclusion and allow them to maximize their potential. Disabled-friendly toilets are available on all floors, featuring non-slippery flooring to facilitate safe movement for differently abled individuals.

Guru Nanak Khalsa College for Women is dedicated to cultivating an inclusive and accessible environment for all its students, including disabled (persons with disabilities). To guarantee equitable opportunities for every student in their academic pursuits, the institution has established a wheelchair accessibility system throughout its campus. This provision is intended to augment the mobility and autonomy of disabled students, thereby allowing them to navigate the college grounds with ease and engage in diverse activities unimpeded.



DIFFERENTLY ABLED FRIENDLY RESTROOM



DIFFERENTLY ABLED FRIENDLY RESTROOM

RAMPS

The campus has constructed ramps to provide all students and employees with a comprehensive and inclusive teaching and learning environment, free of physical barrier. These structures facilitate unhindered movement for individuals with diverse abilities who use wheelchairs.



RAMP NEAR MUSIC ROOM



MEDICAL ROOM RAMP



COMMON HALL RAMP



WHEEL CHAIR FOR DIFFERENTLY ABLED



PROVISION FOR ENQUIRY AND HUMAN ASSISTANCE